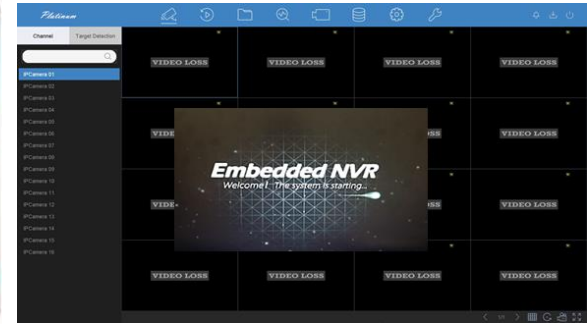


LTS Connect is the Mobile app for Platinum Series DVR/NVR/IPC.

It is the primary design for the PTCloud (Cloud P2P) solution. There is no need to program the router with the port forwarding. Recommended use for less than 4 people remotely watching at the same time.

There are 3 important steps:

1. Enable PTCloud
2. Register/Login to the account.
3. Add the QR code to this account. (only for the 1st time)



Pros: Easy setup. Don't need to program the router, especially with Satellite modem.

Cons: Slower compare to the IP access. Won't support the video downloading.

1 ENABLE PTCloud

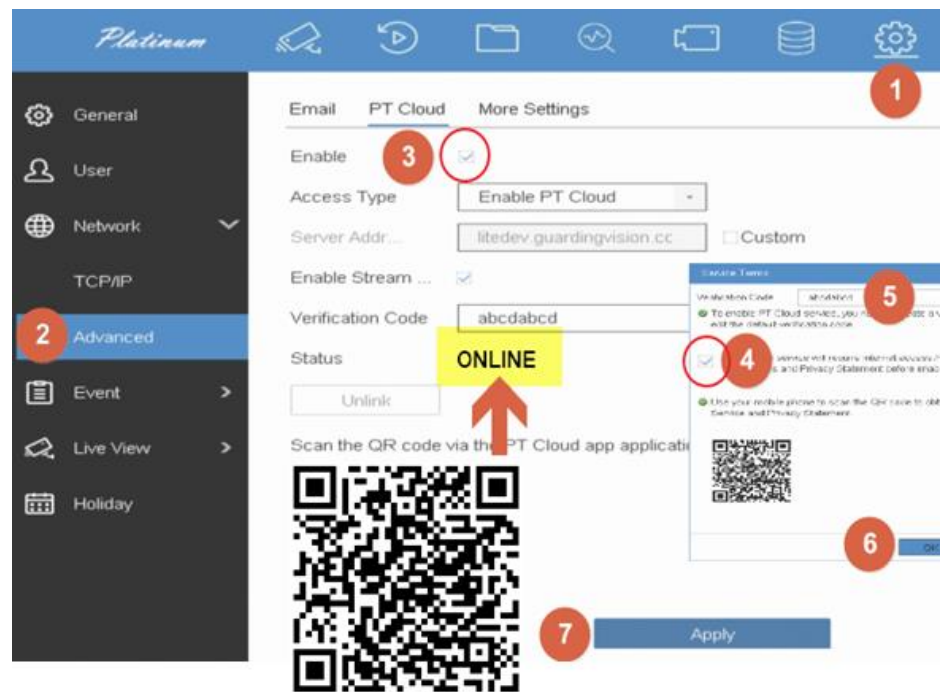
(from the Local DVR Menu)

1. **System Configuration**
2. Network > TCP/IP
Enable DHCP & Apply
Then, go **Network > Advanced**
3. Enable PTCloud, (select check)
4. A window will pop up after the check.
Select to agree (check).
5. Create the Verification Code
Minimal require 6-chars; case-sense
6. OK
7. Then, Apply the setting at final

After applied, go back to the TCP/IP & wait for few secs. Come back to this page (PTCloud).

Make sure the Status is **ONLINE**

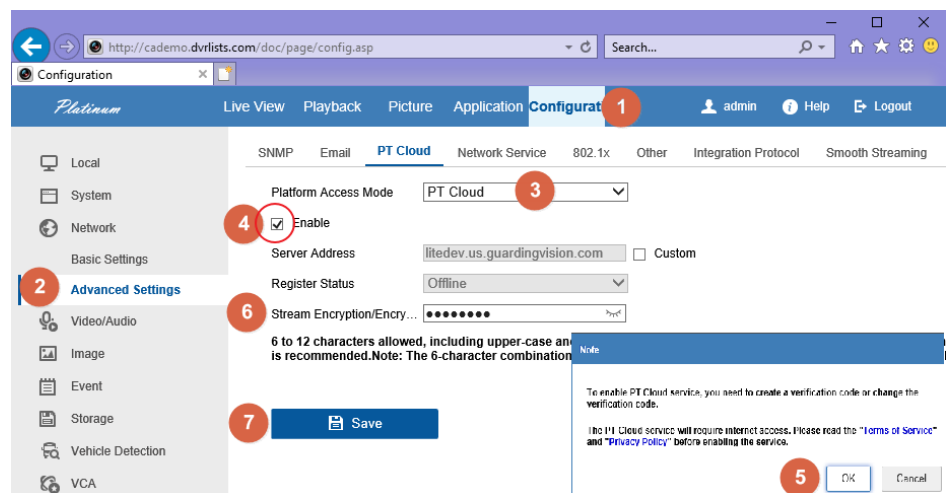
Note: If it shows offline, please go check #2 step.



Enable PTCloud from the browser.

1. Open Browser; enter the IP address and log in.
Go to the Configuration.
2. Network > Advanced Settings
3. Select PTCloud from the drop menu.
4. Enable
5. A window will pop up, select OK to agree
6. Setup the Encryption/Verification Key
7. Save

After Save, please refresh the page and make sure the Register Status is **ONLINE**



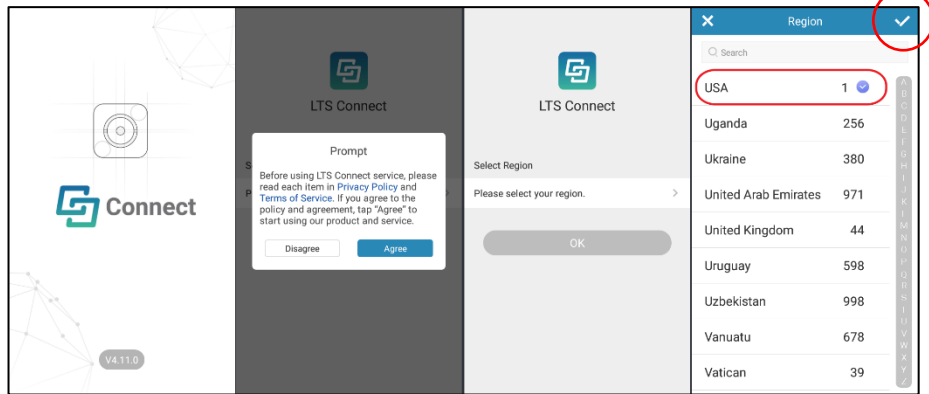
2 LTS Connect Mobile App

Create/Login account

Download the LTS Connect app from the Google Play / Apple app store.

After Agree on the Privacy & Terms policy. Select the proper Country **Region** to continue.

Select **USA** and click ✓ on the top right.



Login Account (Don't use Visitor Mode)

Please always use log in to access the account. If you already login, then it won't show the Login button.

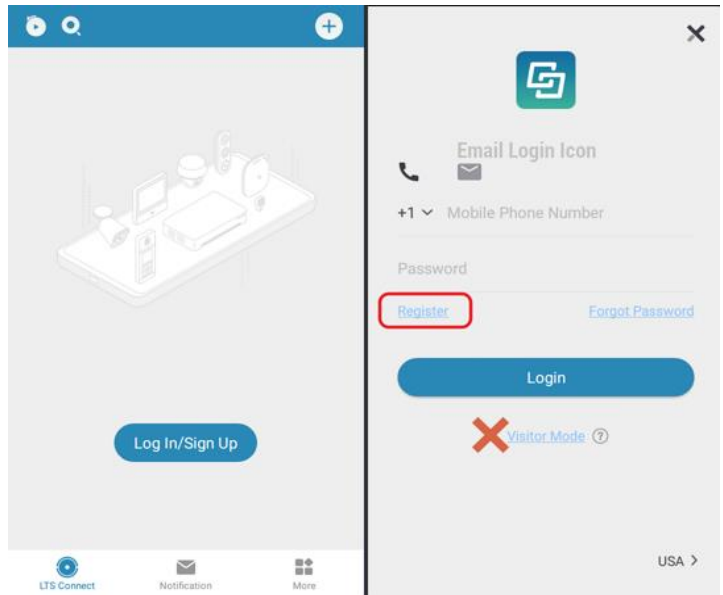
Click **Login** /Sign Up tap **Register** if you don't have an account.

IMPORTANT: Please always use the Owner's Phone#/Email address to register the account. Because later the QR code will bind to this account.

Register account can choose based on the phone# / Email address. If you use the Phone# to register, the LTS Connect app will send a Text message to your phone (the Confirm code). Same thing with Email.

After you enter the confirmation code, you can create the Login password for this account. Then, the registration is completed.

If you already have the account but forgot the password, please use the forgot password to recover it. After you enter the phone# / Email address, the LTS Connect app will send you the confirmation code. After validating the code, you can reset the login password.

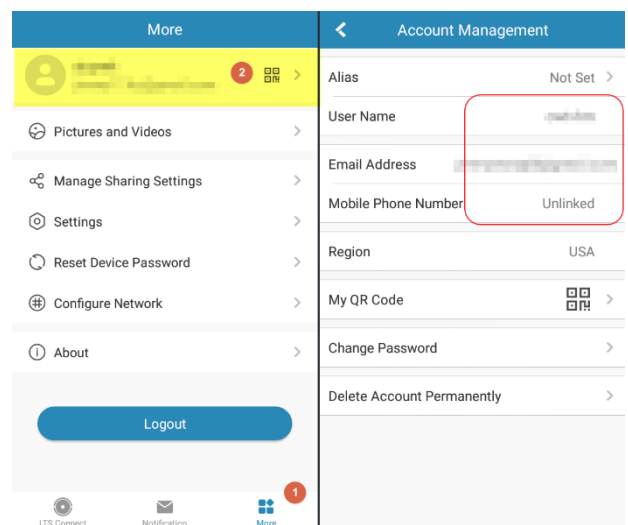


The Visitor mode (Don't use it) is design for the temporary account use purpose. Once you logout, the account will be expired. Simply said, it is for the technician use or the share account purpose. **But, even for the share account; I recommend use the regular account** instead of using the visitor mode account. If you use the visitor mode but accidentally logout, then you have unbound the QR code account from the DVR/NVR and start over.

Turn to Page 3, Add/Bind the QR Code.

How to find out my Account information?

1. Go to the bottom right, click **More**.
2. If you already Login, should see your information on Top. Otherwise, you will see the Login/Sign Up button.
3. After tapping my information. Should see Account Management.
4. My QR Code is for sharing purposes. Will explain in the end chapter.
5. If you want to change your Cloud Account Login Password (not the DVR/NVR). Go Change Password.



3 Bind QR Code

Add the Device

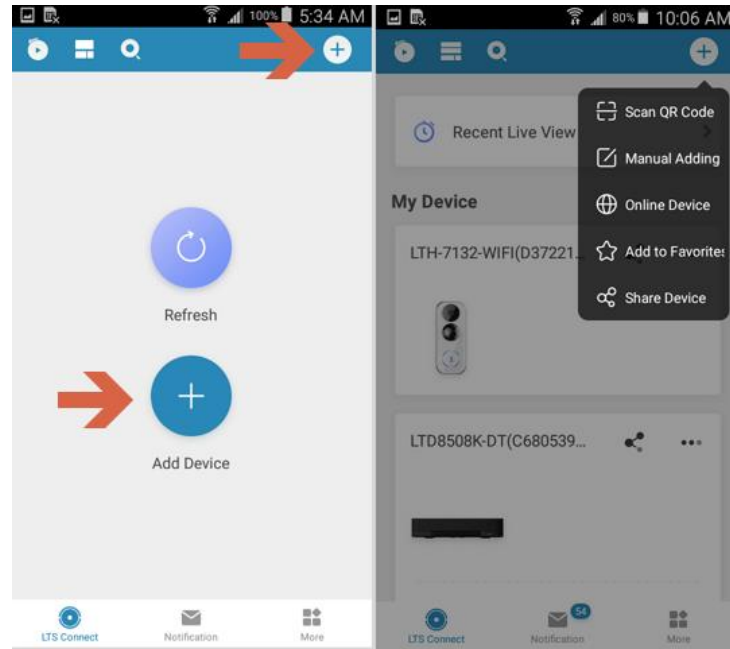
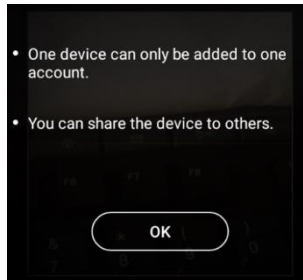
Click  **Add Device**

or choose it from the upper right menu, select Scan QR Code.

Then, you can use the Mobile Phone Camera to scan the QR code from the DVR/NVR or the Sticker.

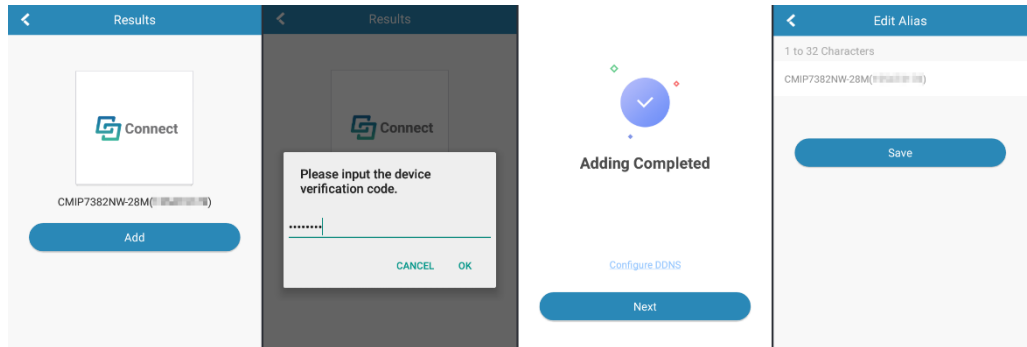
Important:

The device can only be added to one MASTER account. Once it is been added, it belongs to that account until removed from that account. Please make sure your account always retrievable. LTS is unable to respond to any account lost issue.



Add Device

After Scan the QR code, the device will be detected. Click **Add**, enter Verification Code, Add Completed, **Next & Save**.



Add Device without QR Code.

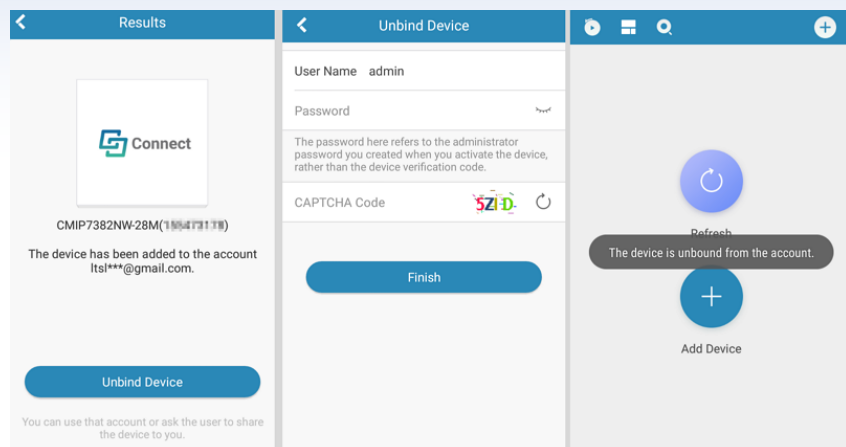
You may use Manually Adding by SN number. Here is how to find the Cloud ID from the Browser.

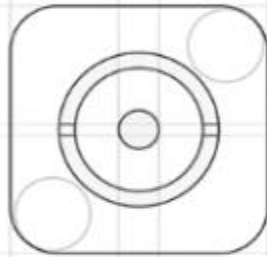
Basic Information	Time Settings	RS-232	RS-485	Menu Output	About
Model	LTN8932-P16				
Serial No.	LTN8932-P161620170215CCRR716187117WCVU				

Unbind

If the device has been added to another account and you need to unbind it from the original account first. Or you can try the Unbind button. This unbind device button “may” work when you are at the local network (not remotely).

1. The device must be online.
2. Must unbind it within the same network.
3. The device had the latest firmware date after 2019.
4. If you want to unbind from PC, you need the latest IP Portal software with the unbind button, but all previous requirement is still needed.
5. If it is DVR/NVR, you may unbind it from the “Local” monitor screen Menu PTCloud section. (not from the PC)

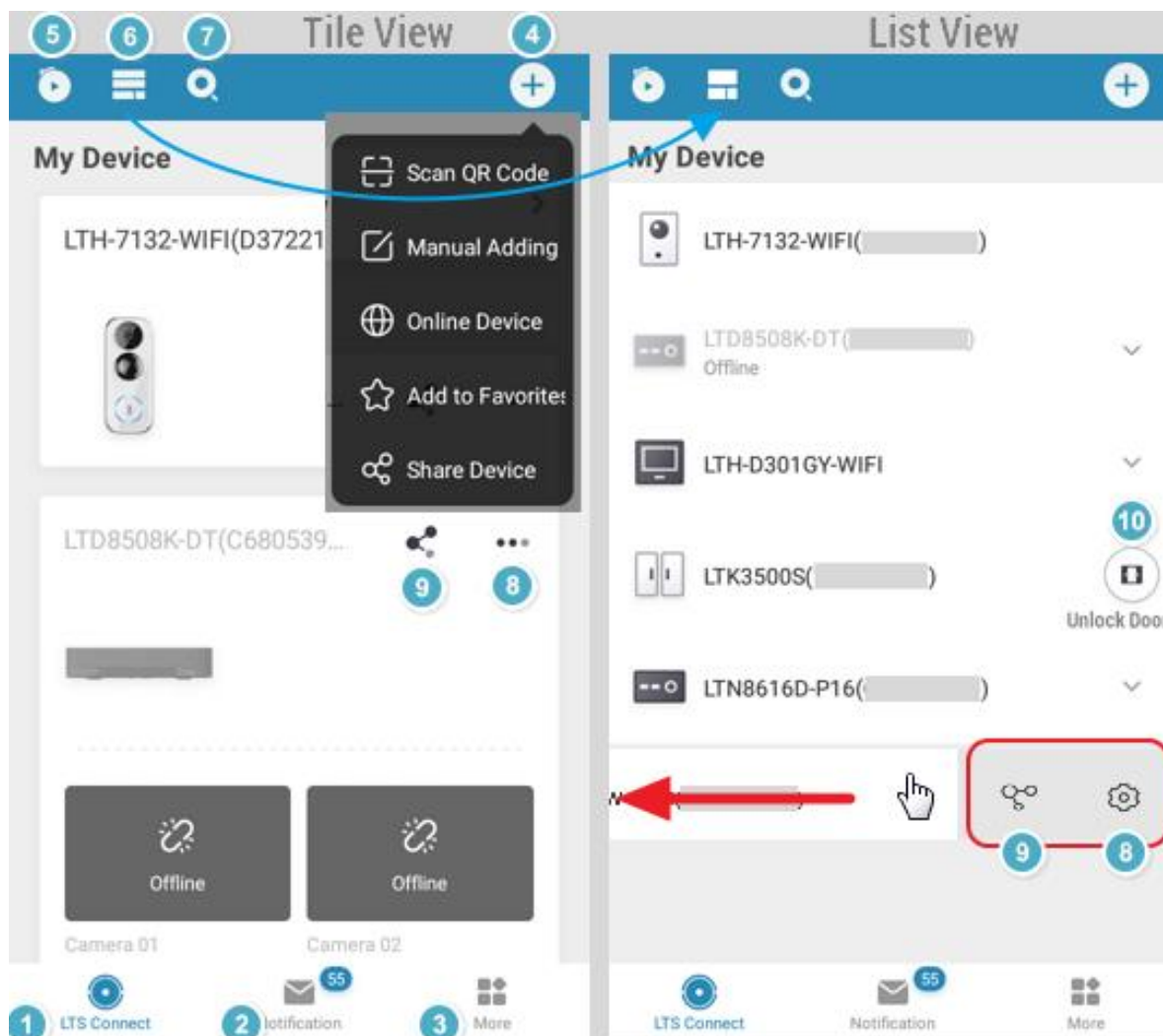




Connect



LTS Connect Quick Index



- | | | |
|-----|----------------|--|
| 1. | LTS Connect | Main View / Playback |
| 2. | Notification | Most recent 7 days push notification. |
| 3. | More | the General settings for this app (not the Device setting) |
| 4. | Add | Scan QR / Manual Adding / Online Device / Add to Favorite / Add Share Device |
| 5. | Playback | Video Playback by Normal or by Event (based on the Notification) |
| 6. | Device View | Display device in Tile view / List view |
| 7. | Search | Quick find the device by name |
| 8. | Device Setting | Swipe the Device in List from Right to Left. It shows the setting button. |
| 9. | Share Account | Share this device with another account. |
| 10. | Unlock | the Unlock Door button |

Note:

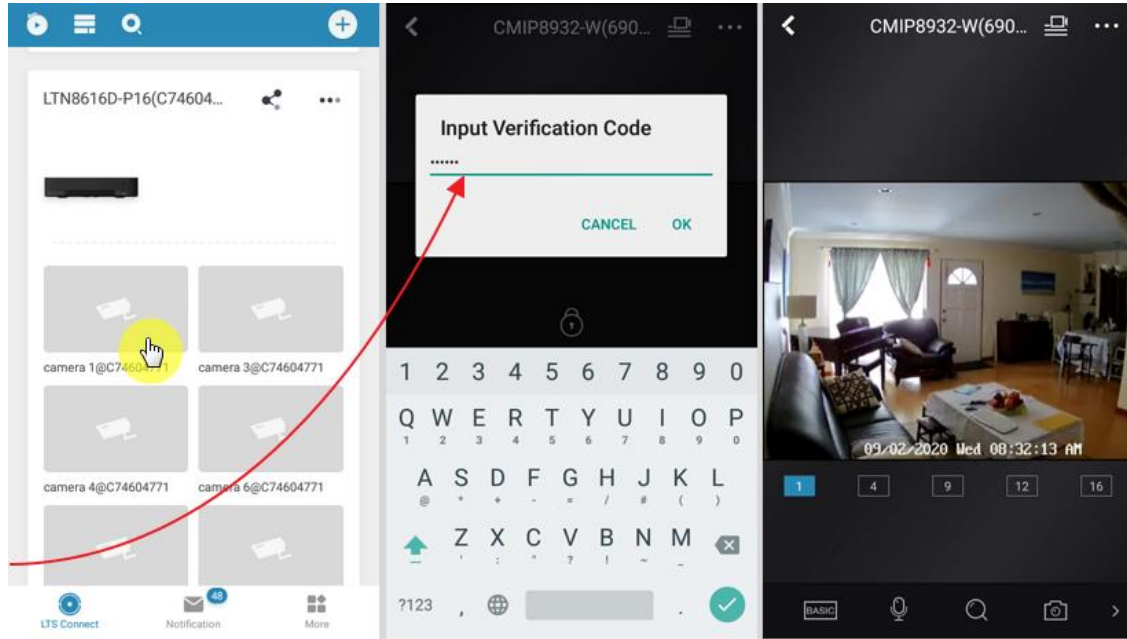
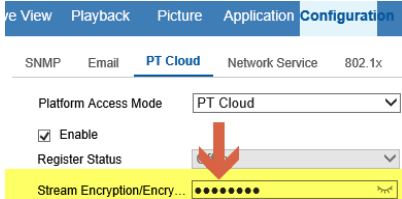
When you switch to the ListView, swipe the device name will display the Setting (8) or Share (9) button.
If you only can see the Setting but no share it, then this device is shared from another account.

Live View

Tap the camera and view.

If the device has been encrypted video signal, please enter the verification code.

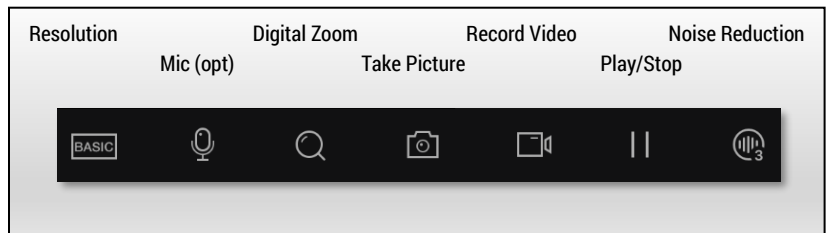
You can find out the verification code from the Local DVR/NVR menu, from the PC, or from the Sticker itself.



Swipe Function bar icons maybe vary but simple.

HD Resolution will only work with single-window mode. When switching to the MutiView, it will go back to Basic.

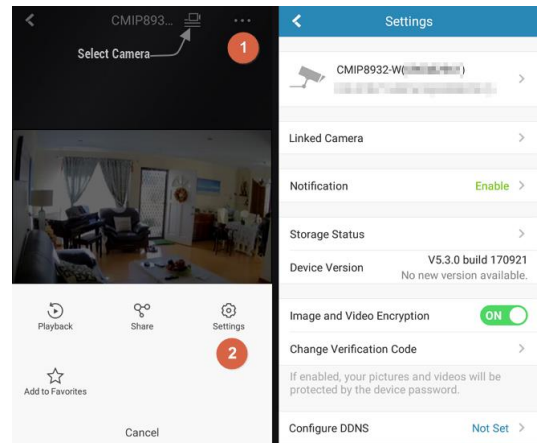
Digital Zoom up to 8x; Use 2 fingers to stretch the video.



Option Menu

Settings (Device)

- Linked Camera** = Show/Hide Camera
- Notification** = Enable Push Notification
- Storage Status** = SD Card Settings
- Device Version** = Firmware Version
- Image & Video Encryption**

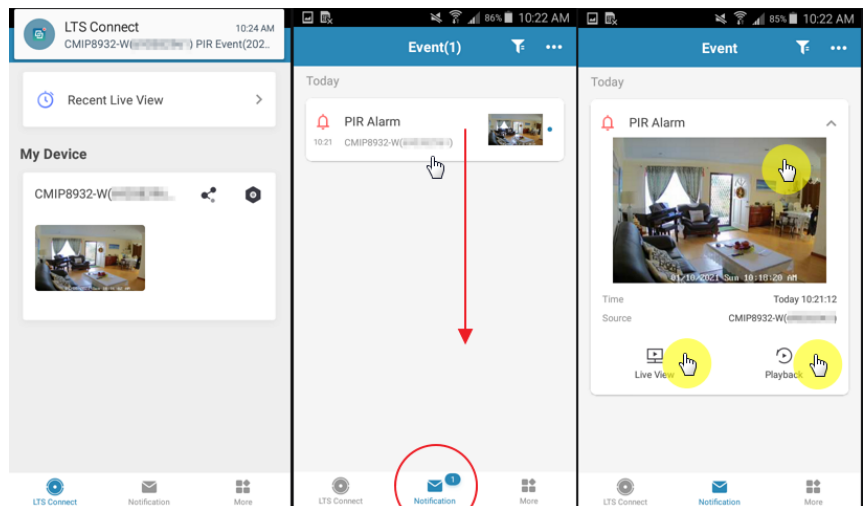


Notification (Event / Call)

When there is a Push Notification Triggered. It will pop up on the top and display Badge. Tap the Notification icon at the bottom to open it.

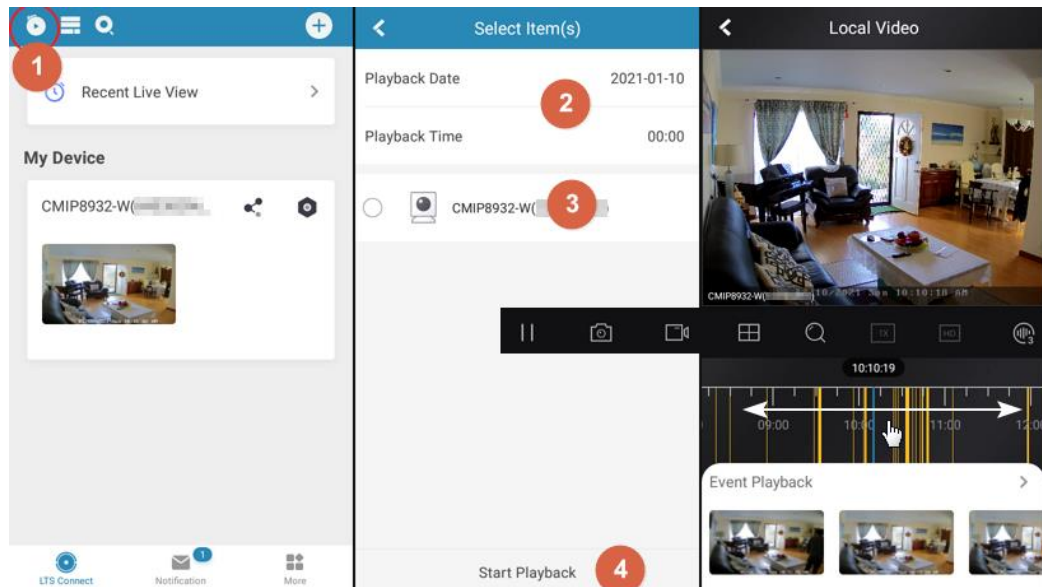
Tap Event will display the detail.

See Appendix A. How to enable the Push Notification



Playback

1. Tap Playback icon
2. Select the Date & Time
3. Select Device
4. Tap Start Playback



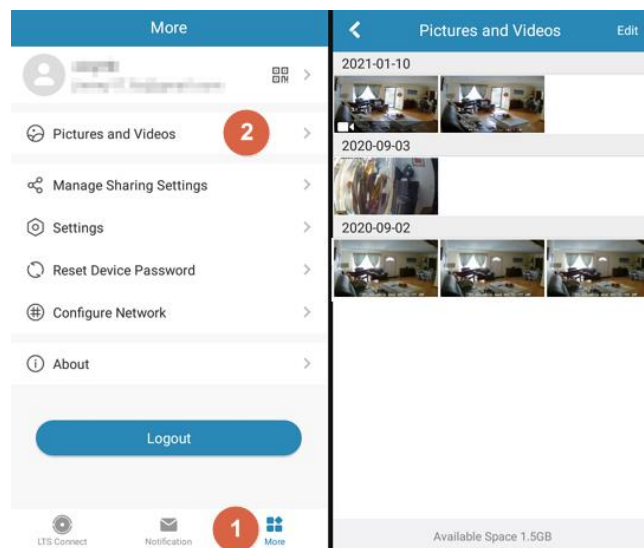
Event Playback

The event playback at the bottom is a reserved feature, based on the notification itself. Simply said, if there is no notification, then the Event Playback will not function at all. So, just ignore it.

Troubleshooting:

If you got the error code during the playback, mostly it is related to the network connection issue (either the mobile phone is too slow or the network issue). Try to close the app and re-run it. If the playback from the Push Notification while recording is still in progress, you have to wait until it finishes the record then you can play it.

Snapshot / Capture can save the Picture/Video to the Phone. You can find it out from the More button (Pictures and Videos)



More

You can Logout or log in from here.

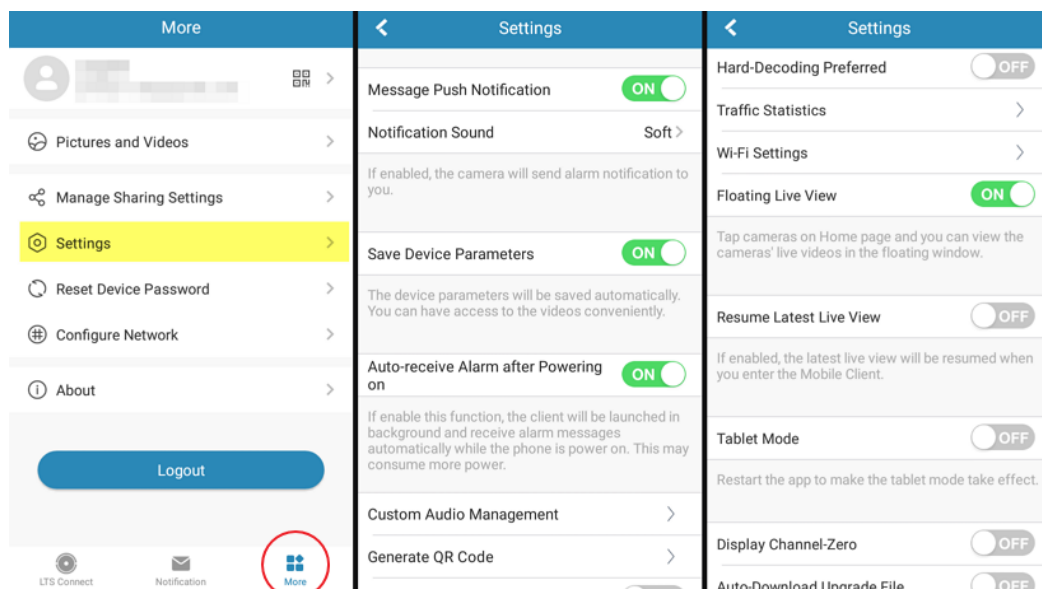
Pictures and Videos

All snapshots/captures will be here.

Reset Device Password is for the firmware v4 DVR/NVR only requires the sticker QR code.

More > Settings

This is the LTS Connect Mobile App Settings



See Appendix C for more detail.

Appendix A Sharing

There are two ways to share account connections.

- 1. Everyone uses the same Phone# / Email address to log in.**
 For example, husband and wife are using the same Phone# & Password to log in.
 Both logins will be the same, which is the Master Account.
 For a simple relationship, like Family.
 This will be the easiest way to share it.

Pro: Very easy to access.
Con: If one person messes up the setting (like remove the device), it will also affect another person.

- 2. Share Account Level Control. (Master & Share Account)**
Pro: Got more security level and control.
Con: little complicated
 This method is good for community sharing purposes.
 To use it: you need to have at least 2 accounts first.
 The Master Account is the 1st Cellphone which is the device bind to there. It has all the permission.
 The Share Account is the new account created on a different phone. (**Note:** Only Master Account allow open door)

Share Account (Master / Share Account)

Create a New Share Account on 2nd Phone.
 You need to register (or Login) a **new** different account based on the different phone#/email address than the Master account.

After success Login, go to **More > Account Management > My QR Code.**

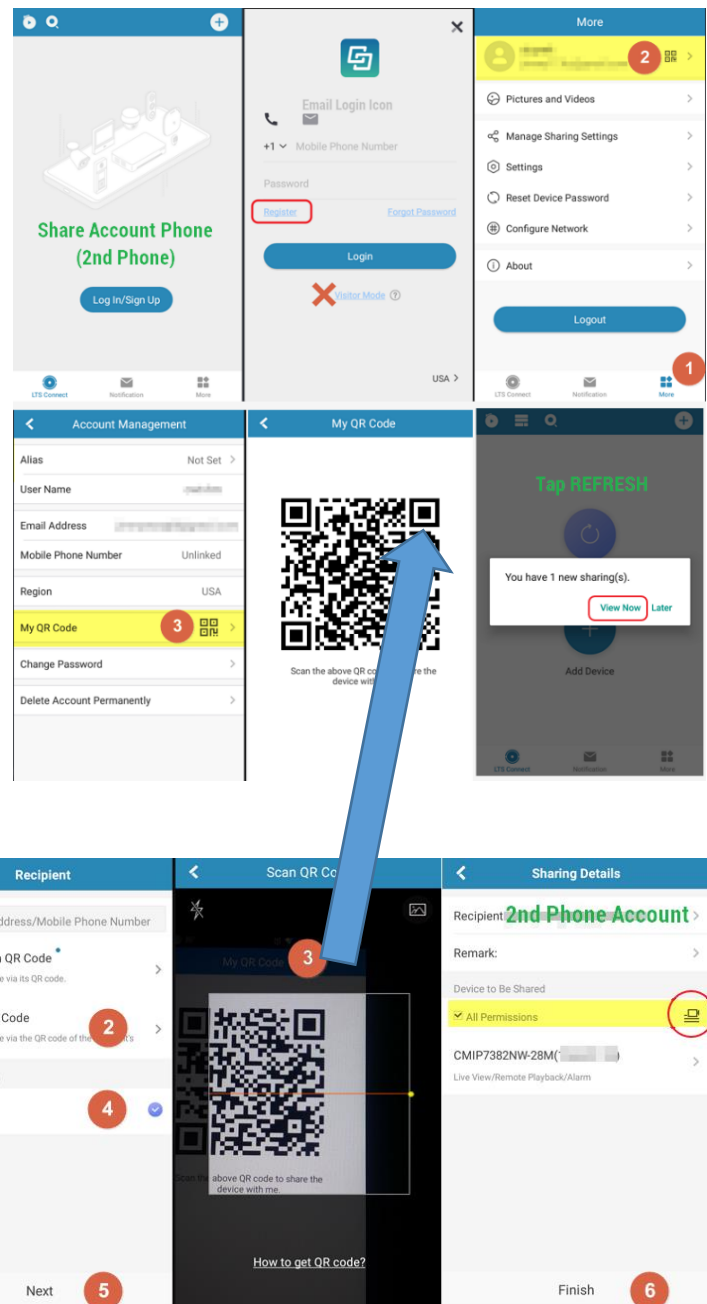
Enable Share from the Master Account

Go back to the **Master Account Phone (1st Phone)**, Login to the Master account First

1. Tap the Share icon.
 2. Click Scan QR Code.
 3. Scan the 2nd Phone QR code.
 4. CheckMark is selected.
 5. NEXT
 6. Define Permission and which Camera to share.
- Finish.**

Then, go back to the **2nd Phone.**
 Tap **Refresh**. You should receive an Invitation. Tap **View Now** to add it.

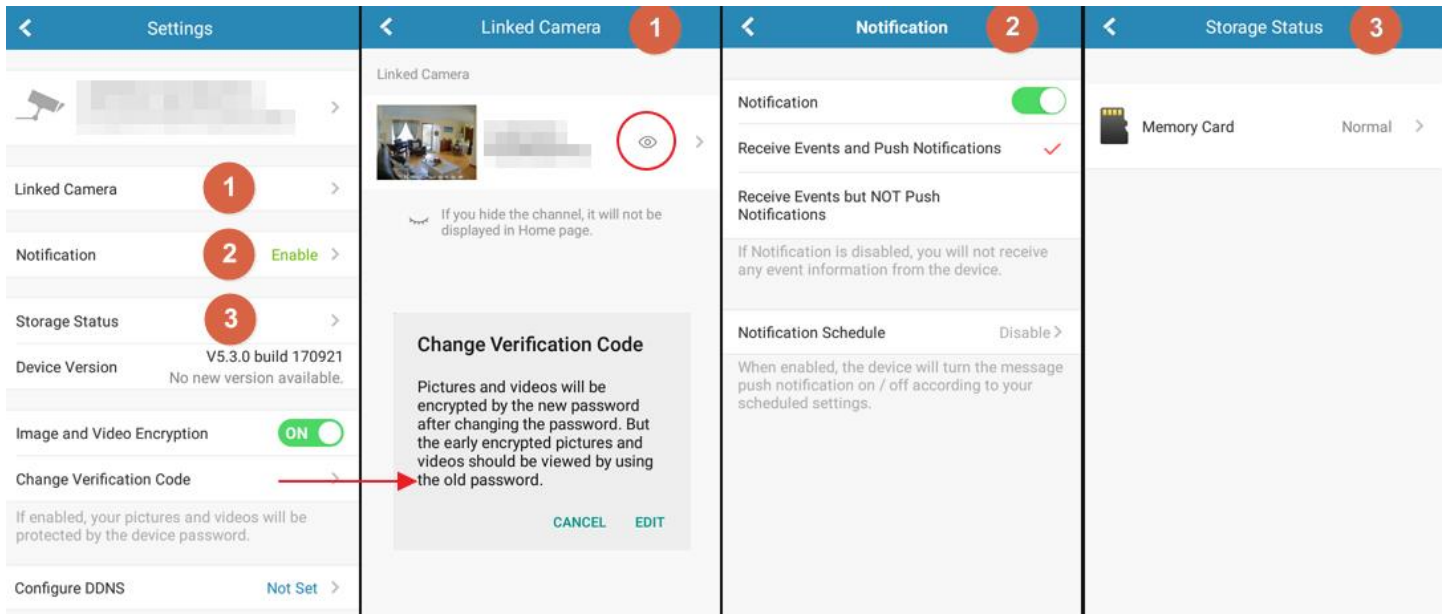
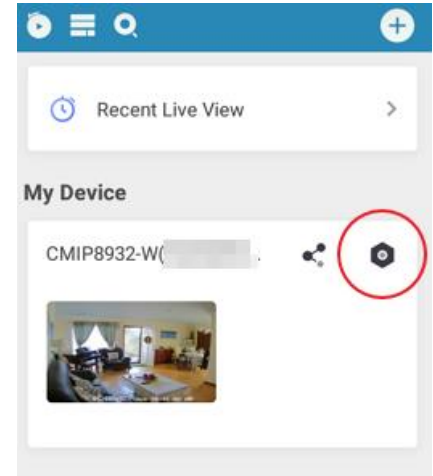
Note: Share via QR Code is only for the newer version 4.11 or higher.
 Which allows Share Account can Scan the Master Account QR code.



Appendix B Device Setting

Press the **Setting** icon to open the device setting.

When you are in the ListView, swipe the device from the Right to Left, you should be able to see the hidden icons.



Linked Camera

You can disable some cameras. For example, no video camera or control the camera amount connections.

Push Notification.

You can program notification by schedule from here.

Storage Status shows the current storage healthy.

Change Verification Code

You may change the verification code if you need it.

Image and Video Encryption is helping for security.

However, if you have a slow network connection or playback issue, you may consider turning it off to improve the performance.

Delete Device

If you like to add this device to a different account, you can delete it from here.

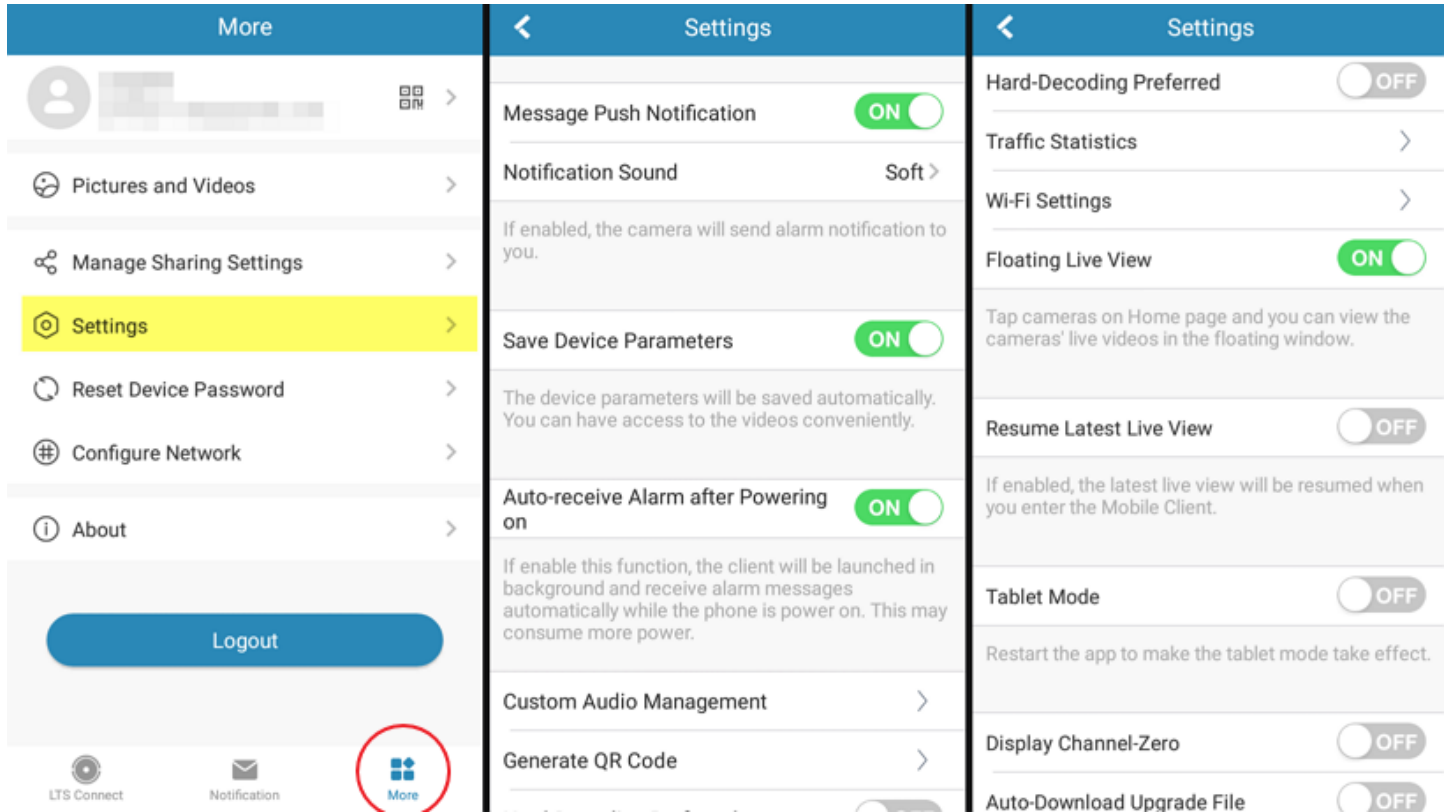
Configure DDNS

If you are still able to perform the Router Port Forwarding. You can use this function to program the DDNS. Then the Remote Configuration will work after this.

Appendix C Mobile App Settings

(Usually you don't need to change anything from here)

This setting is for the Mobile App, not the device. Please don't confuse it.



Message Push Notification

is the main control of your LTS Connect notification. If you turn it off from here, there is no push notification will be received.

Save Device Parameters

Recommend keep as default (ON)

Auto-receive Alarm after Powering on

Recommend keep as default.

Custom Audio Management

This feature is reserving for a new model device.

Generate QR

For the IP domain address purpose. Use this can copy the IP Domain address to another phone.

Hard-Decoding Preferred

Recommend keeps as default. (Can't tell difference but fisheye will disable if you use it)

Resume Latest Live View

Recommend keep as default. (Don't use it especially if your internet speed is not fast)

Floating Live View

Tap camera on the Home page and you can view the camera's live videos in the floating window. This function is based on what you like. When watching the intercom will be very handy.

Wi-Fi Settings

for the Doorbell camera programming Wifi setting feature.

Display Channel-Zero

If you have a really slow internet connection but you still want to see all the video.

Tablet Mode

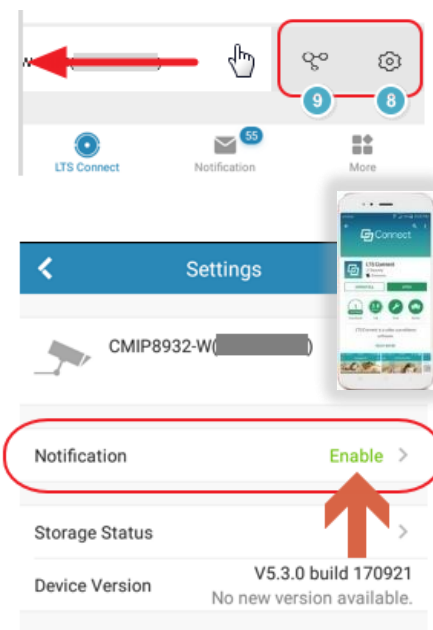
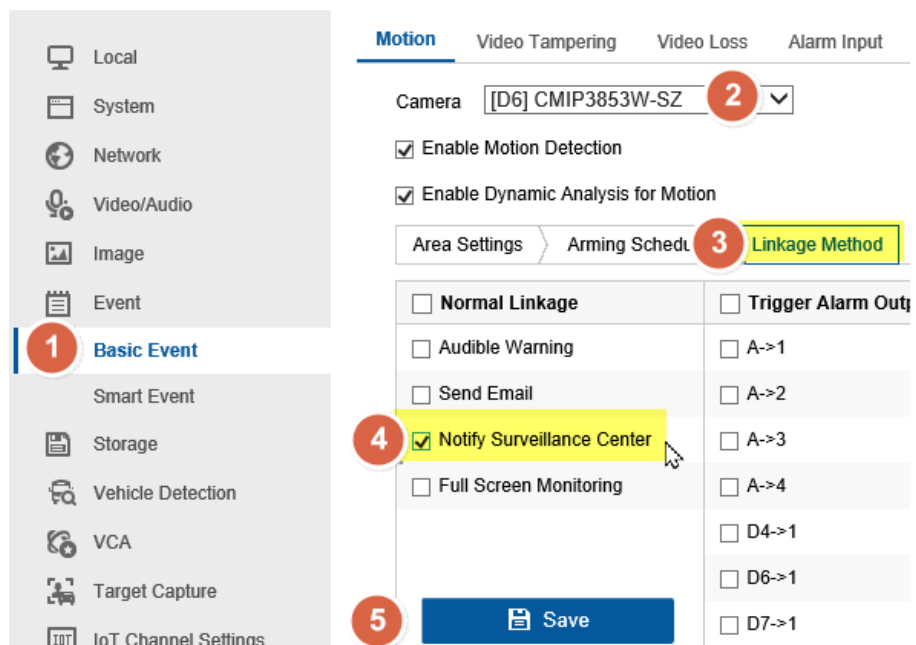
If you want to set the app as horizontal display as default.

Auto-Download upgrade File

(reserved; no effect)

Appendix D Setup / Turn-On the Notification

- I. Open Browser, Enable Notify Surveillance Center (see picture)
 1. Event > Basic Event
 2. Select the corresponding camera.
Make sure Motion Detection is enabled and Red Color Grid is defined.
 3. Linkage Method.
 4. Enable Notify Surveillance Center
 5. Save it



- II. Open LTS Connect mobile app.
- III. Go to the Device Setting.
- IV. Find out the Notification, **Enable**.

Please check our KB site for more detailed information.

<https://ltsecurityinc.zendesk.com/hc/en-us/sections/360009278353-Push-Notification-Email-Alert>

Appendix E: Adding IP/Domain

There are several features of this adding button.

Share Device

It is the same function as the Share Account, but it only works with the PTCloud connection device.

Add to Favorite

You can select several channels and grouping into a Favorite

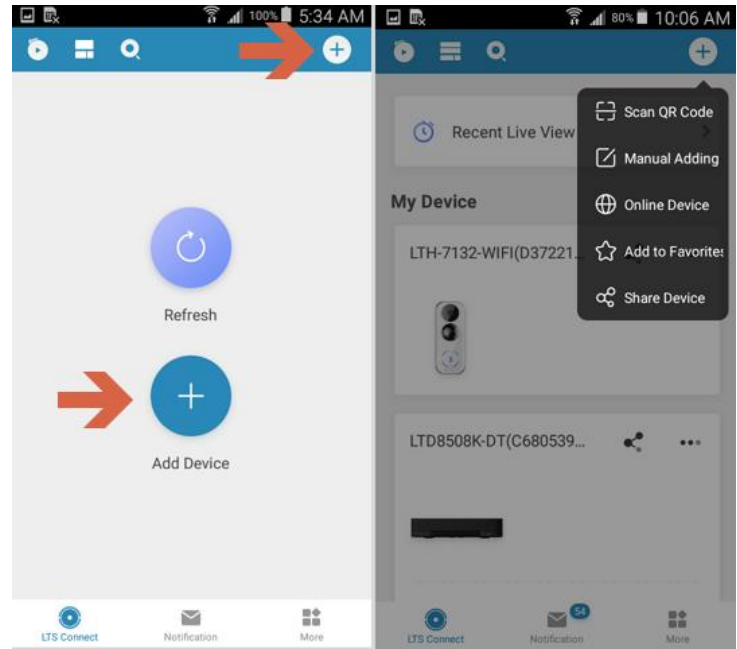
Although the LTS Connect app is primarily designed for the PTCloud connection, it is also able to support the IP/Domain connection.

Online Device

If it is under the same local Wifi network, you can use this function to search the online device without PC. (Only work with IPv4)

Manual Adding.

You may enter the IP/Domain address here and make it connect.



Here is the function comparison table in between LTS Connect and NVMS7000

	LTS Connect Mobile App	NVMS7000 Mobile App	
Support PTCloud Access	Yes	Yes	
Support IP / Domain	Yes	Yes	
Push Notification	PTCloud Only	IP/Domain Only	Terms of Service and Privacy Policy Updated By tapping Agree, you agree to our Terms of Service and that you have read our Privacy Policy .
PTCloud Share Account	Yes	NA	
Live View Channel	Supports 16 CH per screen	Supports 16 CH per screen	<input type="button" value="Agree"/>
Playback Channel	1	1	
Quick Flow View	Yes	NA	
Special Support Features			
Doorbell Camera	Yes	X	
3500s Intercom Unlock	Yes	X	
PTZ Control	Yes	Yes	
Two-way Audio	Yes	Yes	
Fisheye Expansion	IP/Domain Only	IP/Domain Only	
Alarm Output Trigger	IP/Domain Only	IP/Domain Only	

Tips: IP/Domain Address (transfer phone)

If you have multiple IP/Domain address and want to transfer from one phone to the other. Use Generate QR code and Scan QR code can quickly perform the copy action.

Go to More > Settings > Generate QR codes

You can select multiple IP/Domain devices (up to 10) and generate as one QR code.

Then, you can use 2nd phone Scan QR code to add the device from it.